

OLYMPIA PHASE I PARCEL "L" REPLAT

BEING A REPLAT OF BLOCK L, WATER MANAGEMENT TRACT No. 5, WABURTON TERRACE, SHEPARD PLACE, SIMONSON DRIVE, WOOLWORTH DRIVE AND A PORTION OF TRACT B-4, AS ALL ARE SHOWN ON OLYMPIA PLAT I, AS RECORDED IN PLAT BOOK 93, PAGES 135 THROUGH 161 OF THE PUBLIC RECORDS OF PALM BEACH COUNTY FLORIDA. IN SECTION 18, TOWNSHIP 44 SOUTH, RANGE 42 EAST, VILLAGE OF WELLINGTON, PALM BEACH COUNTY, FLORIDA

SHEET 3 OF 5  
JULY 2002

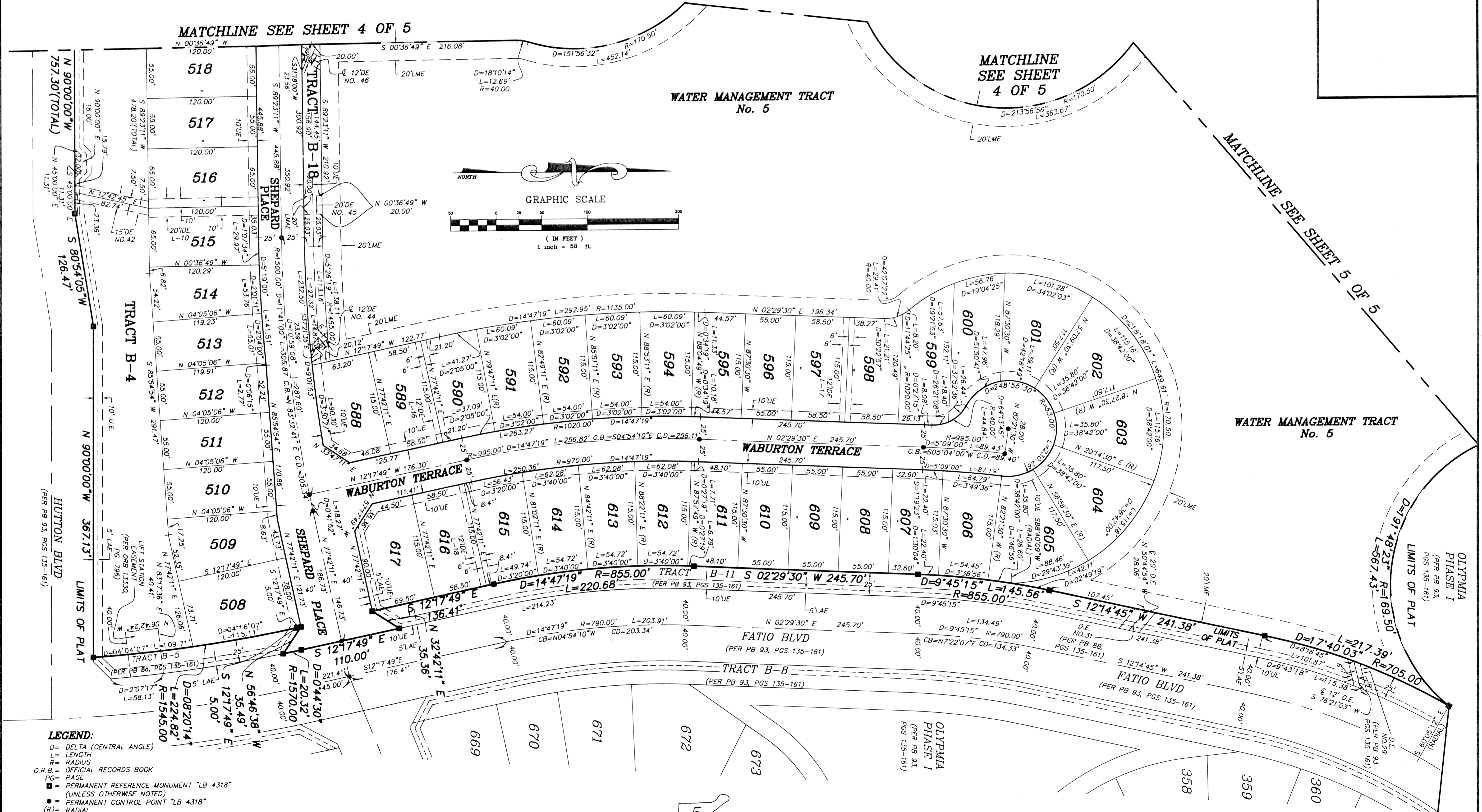
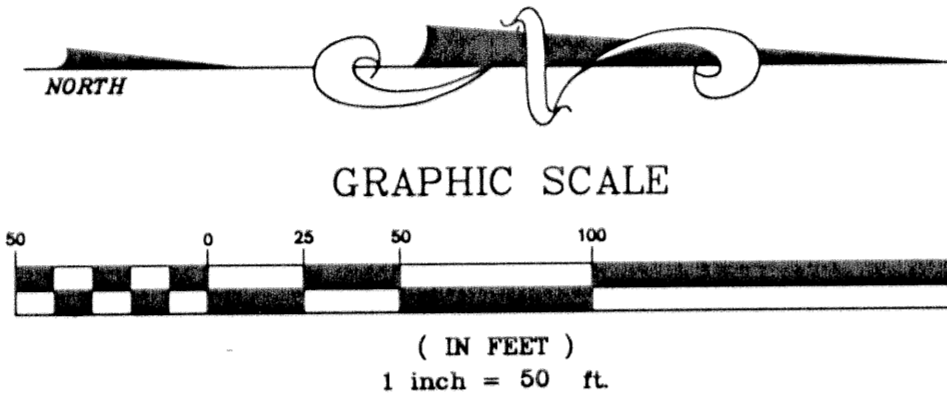
MATCHLINE SEE SHEET 4 OF 5

MATCHLINE SEE SHEET 4 OF 5

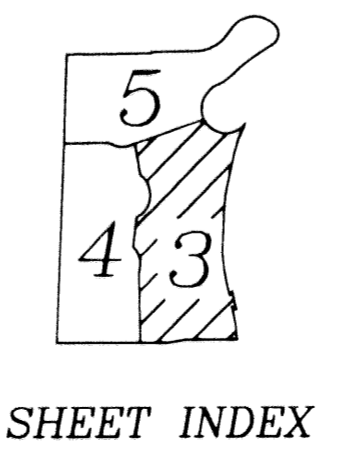
MATCHLINE SEE SHEET 5 OF 5

WATER MANAGEMENT TRACT No. 5

WATER MANAGEMENT TRACT No. 5



- LEGEND:**
- D= DELTA (CENTRAL ANGLE)
  - L= LENGTH
  - R= RADIUS
  - O.R.B.= OFFICIAL RECORDS BOOK
  - PG= PAGE
  - PERMANENT REFERENCE MONUMENT "LB 4318" (UNLESS OTHERWISE NOTED)
  - PERMANENT CONTROL POINT "LB 4318"
  - (R)= RADIAL
  - UE= UTILITY EASEMENT
  - DE= DRAINAGE EASEMENT
  - MREE= MAINTENANCE & ROOF EAVE EASEMENT
  - LME= LAKE MAINTENANCE EASEMENT
  - LAE= LIMITED ACCESS EASEMENT
  - WMT= WATER MANAGEMENT TRACT
  - PB= PLAT BOOK
  - PGS= PAGES
  - IDE= INTERIOR DRAINAGE EASEMENT
  - CD= CHORD DISTANCE
  - CB= CHORD BEARING
  - LWDD= LAKE WORTH DRAINAGE DISTRICT
  - LMAE= LAKE MAINTENANCE ACCESS EASEMENT



**OLYMPIA PHASE I PARCEL "L" REPLAT**

**NICK MILLER, INC.**  
Surveying & Mapping Consultants

SHEET NO. **3**

SCALE: 1"=50'

DATE: JULY 2002

JOB NO. 1008.069

FILE: 1008.069

SUITE 105  
2560 RCA BLVD.  
PALM BEACH GARDENS, FLORIDA 33410  
TEL 561 627-5200 FAX 561 627-0983  
D.B.P.R. LICENSED BUSINESS No. 4318